

International Paint Ltd is part of Akzo Nobel, the Netherlands based company serving customers throughout the world with healthcare products, coatings and chemicals.

Consolidated sales for 2006 totalled EUR 13.7 billion. Akzo Nobel currently employs approximately 61,880 people in more than 80 countries.

International Paint Ltd,
Stoneygate Lane, Felling, Gateshead
NE10 0JY, United Kingdom

Tel: +44 (0)191 469 6111
Fax: +44 (0)191 495 2003



To find out more visit:

www.international-marine.com

Important Notes:

All representations and statements concerning the product(s) in this brochure are accurate to the best of our knowledge. Statements made in this report are advisory only and are not intended to be specific recommendations or warranties of any product, combination of products or fitness for any particular purpose. To the extent permitted by law, we do not accept any liability to any person for any loss or damage (direct or indirect) that may arise from any use of or reliance on any of the methods or information contained in this brochure for any purpose.

Unless otherwise agreed in writing, all products supplied and technical advice or recommendations given are subject to the Conditions of Sale of our supplying company. Any warranties, if given, are contained in those standard Conditions of Sale and are the only ones made with respect to any products we sell to you or advice or recommendations we give to you. We hereby disclaim any warranties or representations, expressed or implied, by operation of law or otherwise, including, without limitation, any implied warranty of merchantability or fitness for a particular purpose.

For each of our products the relevant Product Data Sheet, Material Safety Data Sheet and package labelling comprise an integral information system about the product in question. Copies of our Product Data Sheets and Material Safety Data Sheets are available on request or from our website: www.international-marine.com

✕ and International[®] and all product names mentioned in this publication are trademarks of, or licensed to, Akzo Nobel. © Akzo Nobel, 2007

October 2007



Colour Card

21

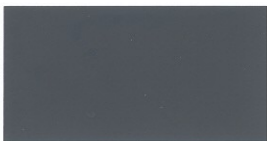
I

II

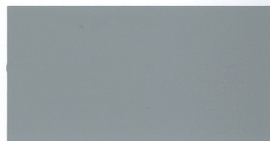
III

IV

A



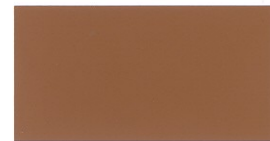
Mid Graphite T806



Storm Grey K724

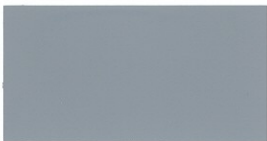


Buff E143

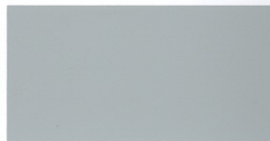


Teak M231

B



French Grey J724



Surf Grey F684



Yellow B134



Signal Green L549

C



Pearl Grey H017



Tropical Blue D441



Estuary Green F445



Eau-de-Nil F384

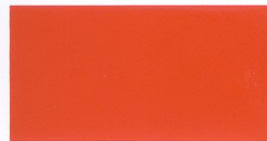
D



Signal Blue D913



Caribbean Blue C935



International Orange D260

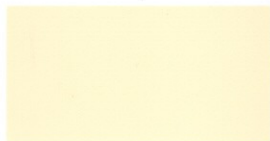


Signal Red C287

E



Ocean Blue E992



Stone D053

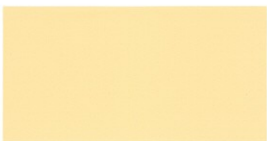


Ensign Red B295



Red L274

F



Sand B125



All of the colours illustrated on this card are available Worldwide from our core range of cosmetic finishes:
Interline 979
Interthane 990
Intergard 740
Intersheen 579
Interlac 665
 Colours black and white not illustrated on this card, are also available.

REFERENCE

GRID REF	SHADE	PRICE REF
A, I	T806	2
B, I	J724	1
C, I	H017	1
D, I	D913	3
E, I	E992	4
F, I	B125	1

GRID REF	SHADE	PRICE REF
A, II	K724	1
B, II	F684	1
C, II	D441	1
D, II	C935	4
E, II	D053	1

NOTES

When placing orders please quote the product name, number and colour, e.g. *Interthane 990*, Ocean Blue.

Shade Reference: Each colour has a specific Alpha/Numeric code e.g. L549.

Price Reference 1-6: Please refer to International Paint Price List for details.

Whilst great care is taken to match colours on this card exactly, there may be slight variations in the colour of product supplied.

Chrome free versions of certain shades are available. Please refer to the International Paint Price List for details.

REFERENCE

GRID REF	SHADE	PRICE REF
A, III	E143	2
B, III	B134	6
C, III	F445	2
D, III	D260	6
E, III	B295	6

GRID REF	SHADE	PRICE REF
A, IV	M231	4
B, IV	L549	2
C, IV	F384	2
D, IV	C287	6
E, IV	L274	1